

Dairy Terms and Breeds of Dairy Cattle



Dairy Cattle Terms

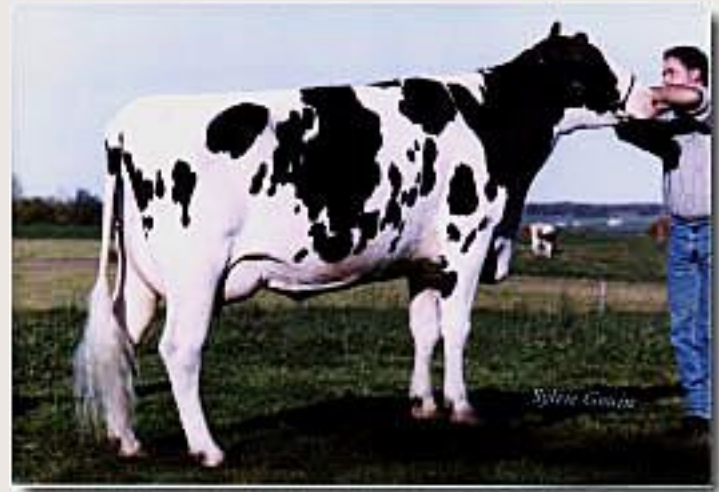
- Calving-the act of giving birth to a calf.
- Colostrum- First drink of milk that the calves take.
- Cull- Animal sent away to be slaughtered.
- Docile- quiet & easy to control.
- Gestation- the time when a cow is pregnant.
- Lactation- period of milk production; the production of milk by mammary glands.

Dairy Cattle Terms Cont.

- Manure- Feces; animal fecal matter.
- Mastitis- When a cows udders are so large that they get infected.
- Milk Fat- the natural fat of milk from which butter is made.
- Roughage-Hay, alfalfa; anything that has been cut to feed an animal.
- Veal– One month old calf meat.
- Weaned- the process of gradually withdrawing a calf from its mothers milk and providing it with another food source.

Holstein

- Originated- Netherlands
- Desirable Traits- Straight Top Line, Docile and Quiet, Survives Well on Roughages, Known for outstanding milk production
- Undesirable Traits- Extra Flesh Before Lactation
- Color: black and white or red and white
- Avg. Weight- 1500 lbs.
- Milkfat-3.63%
- Milk Yield- 23,675 lbs./ year



Jersey

- Originated from the Isle of Jersey (small British isle in England)
- Desirable Traits-Known for outstanding milk production, most tolerant to heat, straight top line, great udder attachment
- Undesirable Traits- Nervous and Sensitive Disposition(Skiddish)
- Color: very light gray to dark brown or almost black
- Avg. Weight- 950 lbs., Wide-range of body weight; typically smaller-framed
- Milkfat- 4.62%
- Milk Yield- 16,306 lbs./ year



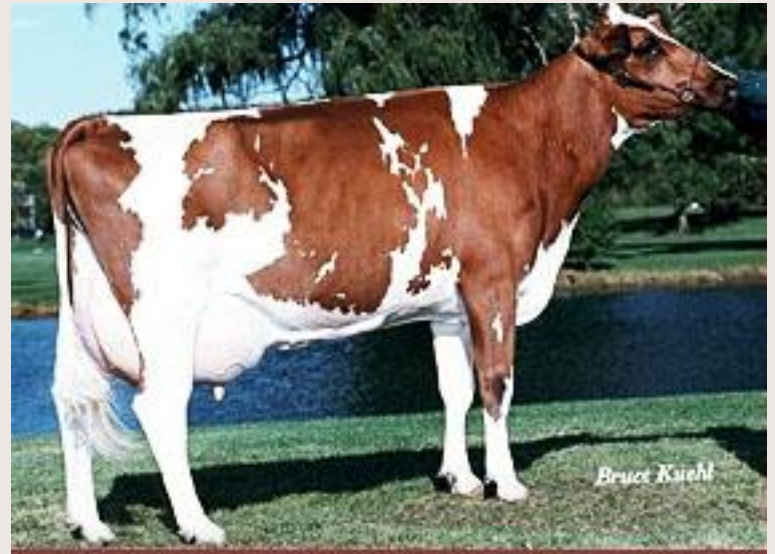
Milking Shorthorn

- Originated in Northeastern England
- Desirable Traits- Dual Purpose Animal, Most versatile of all breeds: good producers, good temperament, good calves, good frame
- Undesirable Traits- Nervous
- Color: red, white, red and white, roan
- Avg. Weight- 1500 lbs.
- Milkfat- 3.55%
- Milk Yield- 16,098 lbs./year



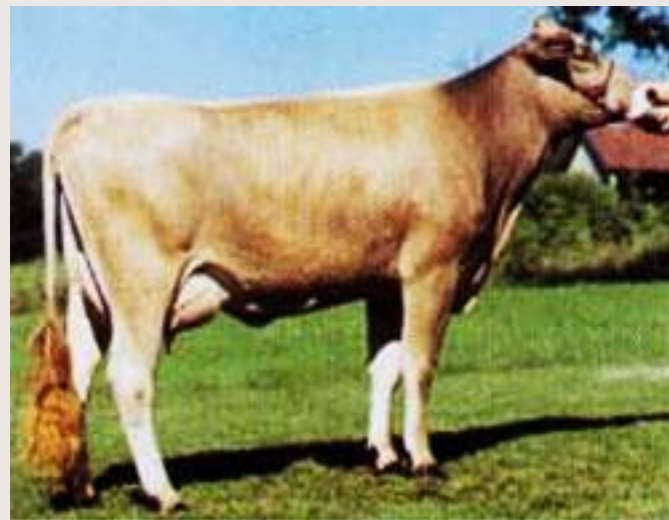
Ayrshire

- Originated in Scotland
- Desirable Traits- Sound feet and legs, Excellent Udder Attachment, Can forage for themselves
- Undesirable Traits- Horns grow “funny”, All are dehorned as calves
- Color: red and white
- Avg. Weight-1200 lbs.
- Milk Fat- 3.8%
- Milk Yield- 16,942 lbs./year
- Originally known as the Dunlop



Brown Swiss

- Originated in Switzerland
- Desirable Traits- Produces milk well in hot climates, lives well in mountain ranges, docile
- Undesirable Traits- Because of foot and mouth disease, only 3 have been imported since 1906
- Color: gray or light brown to dark brown
- Avg. Weight- 1500 lbs.
- Milk Fat- 3.98%
- Milk Yield- 19,385 lbs./ year



Guernsey

- Originated from the Isle of Guernsey in France
- Desirable Traits- Milk is high in protein and beta-carotene so milk has a distinct gold color
- Undesirable Traits- Back and hip problems, not structurally built well
- Color- Fawn Colored
- Avg. Weight- 1150lbs.
- Milk Fat- 4.4%
- Milk Yield- 14,667 lbs./ year



Review

- When an animal is calm and quiet, it means that they are.....
 - A. Cull
 - B. Docile
 - C. Gestation
 - D. Manure

Review

- Which Dairy Cows colors are black & white?
 - A. Ayrshire
 - B. Holstein
 - C. Jersey
 - D. Miss Wohl

Review


- The time when a cow is pregnant?
 - A. Cull
 - B. Gestation
 - C. Docile
 - D. Manure

Review

- Which Dairy Cow is most tolerant of heat?
 - A. Brown Swiss
 - B. Holstein
 - C. Jersey
 - D. Jersey Shore

Review

- Hay, alfalfa; anything that has been cut to feed an animal.
 - A. Gestation
 - B. Lactation
 - C. Roughage
 - D. Veal

- 
- Which Dairy Cow is a “Dual Purpose” breed?
 - A. Bluebell
 - B. Jersey
 - C. Milking Shorthorn
 - D. Veal